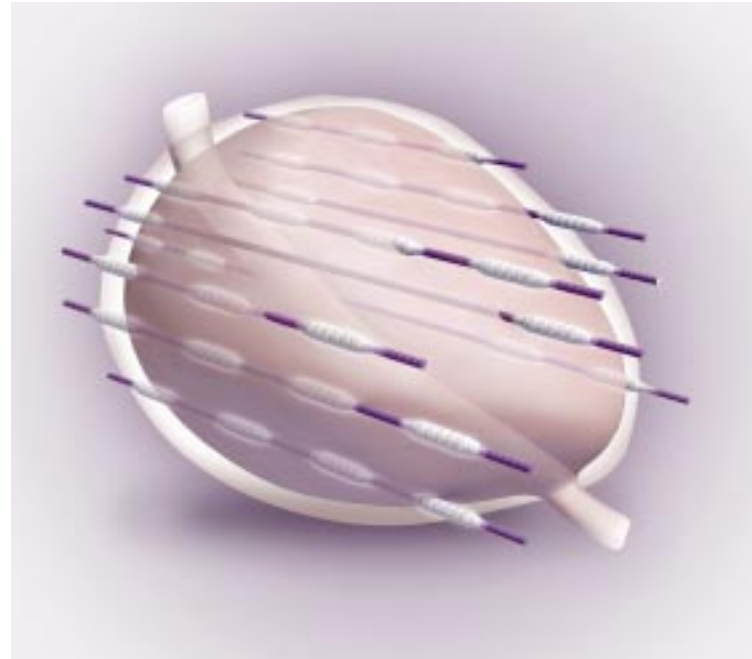
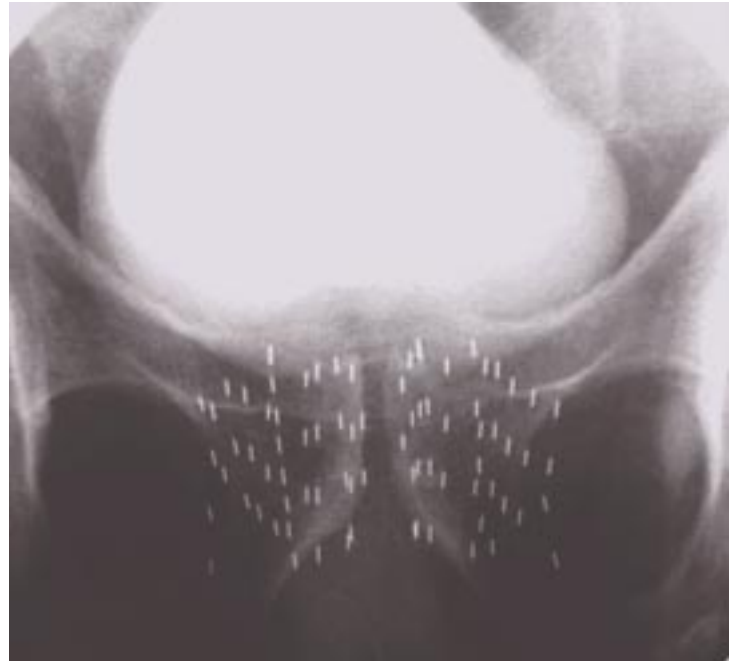


(Iodine-125 Seeds)
RAPID StrandTM Rx



**Prescription loaded
and variable**

ONCURA



Prescription loaded implants

RAPID Strand: Clinically proven

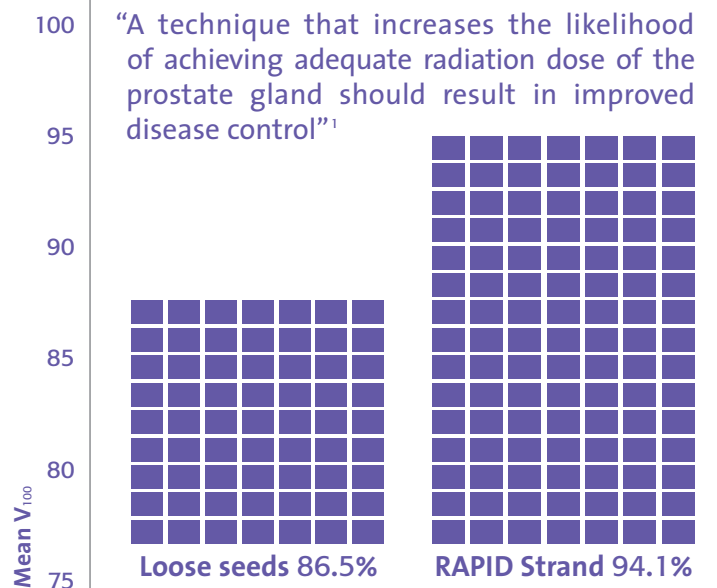
- Improved dosimetry^{1,15}
- Over 10 years of clinical experience^{2,3,4}
- More than 25,000 patients treated with RAPID Strand⁴
- Long-term clinical use of braided suture⁵

RAPID Strand significantly improves dosimetric coverage^{1,15}

- Patients treated with RAPID Strand received 100% of their prescription dose to a significantly greater percentage of their prostate gland ($p < 0.001$)¹

Evidence from multiple studies supports quality implantation as a decisive factor in determining outcomes¹¹

- Improved dose homogeneity¹⁵
- Associated with lower urinary retention rates¹⁵
- Patients receiving the prescription dose to 90% of the prostate gland experienced freedom from biochemical failure¹²
- Prescription dose was often not achieved because of inaccurate loose seed placement—lower doses were associated with inferior outcomes¹³



Prostate volume that received 100% of the prescription dose (mean V₁₀₀) in treated patients (n = 40)¹

For improved dosimetry and reduced seed migration^{1,7}

RAPID Strand allows for the placement of sources outside the prostate gland without the concern of seed migration¹

- No seed migration was observed in patients treated with RAPID Strand^{1,14}
- RAPID Strand can be implanted in periprostatic tissue¹⁷
- Loose seed migration of one or more seeds is observed on chest x-rays in 55 of 100 consecutive patients¹⁶
- Partin et al report between 40% and 50% of patients with prostate cancer harbor extracapsular extension (ECE) at the time of surgery⁸

65% (173 cases had no evidence of ECE)

35% (92 cases with ECE)

More than one third of 265 consecutive radical prostatectomy specimens had ECE⁹

Treating the prostate with a 3-5 mm margin by brachytherapy would encompass all known tumor in approximately 99% of the specimens examined with extraprostatic extension¹⁰



RAPID Strand: Enhanced technical performance

- Easily expelled through conventional needle-plugging materials⁵
 - Strengthened long-axis rigidity facilitates handling⁵
 - The addition of polyglactin 910 spacers increases RAPID Strand's ability to resist lengthwise pressure⁵
- Preplanned and preloaded
- Sterile⁵
- 100% assay⁵
- Pharmacist prepared and reviewed according to a physician's prescription
 - Not manufactured without pharmacist review⁵
- Accommodates variable needle loads⁵
- Long-term, extensive use of polyglactin 910 braided suture in clinical practice⁵
 - Suture material completely absorbed within 90 days⁵
 - Why use a smooth monofilament with no long-term (greater than 5 years) data in prostate brachytherapy?⁴



Prescription loaded

- Prepared according to a physician's plan⁵
- Clinically proven^{1,4,5,15}
- Over 25,000 patients treated⁴
- 10 years experience⁴
- Improved dosimetric coverage^{1,15}
- Eliminates seed migration^{1,14}
- Braided suture⁵

References:

1. Lee W.R., deGuzman A.F., Thomlinson S.K., McCullough D.L. Radioactive sources embedded in suture are associated with improved postimplant dosimetry in men treated with prostate brachytherapy. *Radiotherapy and Oncol.* 65:123-127:2000.
2. Ragde H., Elgamal A.A.A., Snow P.B., et al. Ten-year disease free survival after transperineal sonography-guided iodine-125 brachytherapy with or without 45-gray external beam irradiation in the treatment of patients with clinically localized, low to high Gleason grade prostate carcinoma. *Cancer. Cancer. Vol. 83, No. 5:989-1001:1998.*
3. Grimm P., Blasko J., Sylvester J., Meier R., Cavanagh W. 10-Year biochemical (prostate-specific antigen) control of prostate cancer with ¹²⁵I brachytherapy. *Int. J. Radiat. Oncol. Biol. Phys. Vol. 51:31-40:2001.*
4. Data on file.
5. Data on file.
6. Batterman J.J. Iodine-125 seed implantation for localized prostate cancer. *J.Brachy. INT.* 1998;14:21-27.
7. Tapen E.M., Blasko J.C., Grimm P.D., et al. Reduction of radioactive seed embolization to the lung following prostate brachytherapy. *Int. J. Radiat. Oncol. Biol. Phys. Vol. 42;No. 5:1063-1067:1998.*
8. Partin A.W., Kattan M.W., Subong E.N., Walsh P.C. et al. Combination of prostate-specific antigen, clinical stage, and Gleason score to predict pathological stage of localized prostate cancer. *JAMA.* 1997;277:1445-1451.
9. Sohayda C., Kupelian P.A., Levin H.S., Klein E.A. Extent of extracapsular extension in localized prostate cancer. *Urology.* 55:382-386:2000.
10. Davis B.J., Pisansky T.M., Wilson T.M., et al. The radial distance of extraprostatic extension of prostate carcinoma: implications for prostate brachytherapy. *Cancer.* 1999;85:2630-2637.
11. Grimm P., Blasko J., Sylvester J. Clinical selection issues for permanent seed prostate brachytherapy. *J. Brachy. Int.* 2001;17:143-152.
12. Stock R.G., Stone N.N., Tabert A., Lannuzzi C., DeWyngaert J.K. A dose-response study for I-125 prostate implants. *Int. J. Radiat. Oncol. Biol. Phys. Vol. 41;No. 1:101-108;1998.*
13. Fuks Z., Leibel S.A., Wallner K.E., Begg C.B., et al. The effect of local control on metastatic dissemination in carcinoma of the prostate: long-term results in patients treated with ¹²⁵I implantation. *Int. J. Radiat. Oncol. Biol. Phys.* 1991;21(3):537-547.
14. Al-Qaisieh, B., Carey, B., Ash, D., Bottomly, D. The Use of Linked Seeds Eliminates Lung Embolization Following Permanent Implantation of Prostate Cancer. *Int. J. Radiat. Oncol. Biol. Phys., Vol. 59, No. 2:397-399: 2004.*
15. Fagundes, H.M., Keys, R.J., Wojcik, M.F., Radden, M.A., Bertelsman, C.G., Cavanagh, W.A. Transperineal TRUS-guided Prostate Brachytherapy Using Loose Seeds versus RAPID Strand: A Dosimetric Analysis. *Brachytherapy* 3:136-140:2004.
16. Eshleman, J.S., Davis, B.J., Pisansky, T.M., Wilson, T.M., Haddock, M.G., King, B.F., Darby, C.H., Lajoie, W.N., Oberg, A.L. Radioactive Seed Migration to the Chest After Transperineal Interstitial Prostate Brachytherapy: Extraprostatic Seed Placement Correlates with Migration. *Int. J. Radiation Oncology Biol. Phys., Vol. 59, No. 2:419-425:2004.*
17. Merrick G.S., Butler W.M., Dorsey A.T., Lief J.H., Benson M.L., Seed Fixity in the prostate/periprostatic region following brachytherapy. *Int. J. Radiat. Oncol. Biol. Phys., Vol. 46, No. 1:215-220:2000.*

Oncura, Inc.

401 Plymouth Road
Suite 130
Plymouth Meeting, PA 19462

Ordering & Customer Service:

Toll free: 800-633-4123
Phone: 484-530-3900
Fax: 484-530-3999
Email: info@oncura.com

Website: www.oncura.com

RAPID Strand is a trademark of Oncura.
©2005 Oncura RAPS1030-5000 June 2005
Printed in U.S.A.

☎ 0086

